

The ArchiSuite keyplug

Instructions to Load/Update the Cigraph keyplug

ArchiSuite add-ons use a protection system based on a WIBU USB keyplug. The ArchiSuite keyplug may be used on any ArchiCAD workstation which reads the keyplug.

The keyplug may be either for use on one workstation only, or a network keyplug for more than one workstation.



Cigraph License Activation

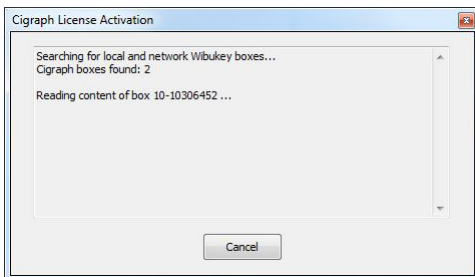


To update the content of your Cigraph Wibukey box you can use **Cigraph License Activation** plug-in included in ArchiSuite package.

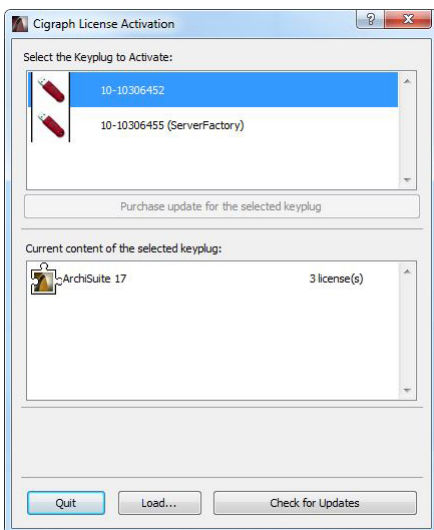
You can launch the plug-in from ArchiCAD menu **Design** in the submenu "Extra Design".

You will see the initial window where you can change the language to be used by pressing the appropriate button.

Clicking on **CONTINUE** button, the search for local and network Cigraph boxes will start.



When the search ends you will see the following dialog:

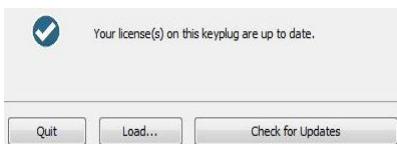


The top list shows founded boxes. For network boxes is specified in brackets the name or IP address of the server they are plugged on.

The bottom list shows the content of the selected box.

Clicking the "Check for Updates" button the program connects to Cigraph site to find updates for the listed boxes.

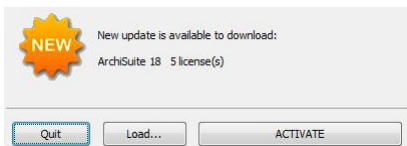
If a box is already updated, in the bottom area of the window the following message appears:



Instead if an update is available for the selected box, the icon of the box will change to this:



and the message in the bottom area will show new content available for the box:



To write new content in the selected box, click on the "ACTIVATE" button. The window will change to confirm the update:

